

PERCEPTION ADVANCED EXPORTS

Overview

For off-line analysis using third-party software packages, *Perception* offers a variety of export formats for many popular programs. Extensive built-in set-up options let you export the data of interest the way you want, and nothing more. In addition, these exports can be combined with the powerful automation and post processing features included as standard in *Perception*. On requests, the list of exports can be enlarged with the use of any other special export format you need. The export routines are customized programs that can be expanded on customer demand.

Standard export formats

Perception has three export formats on board:

- ASCII
- FlexPro (imPRESSion)
- TEAM data

The ASCII format provides basic interfacing with almost any third-party analysis software. The FlexPro format integrates seamlessly with this advanced tool for analysis and presentation. TEAM data gives access to the LDS legacy software like ProView, TeamPro and DataViewer.

Advanced export formats

In addition to the basic export options, the Advanced Export Option gives you:

- CDF (Airbus)
- DADISP
- DATS
- DIAdem 8.0
- DIA-PC
- Microsoft Excel
- FAMOS 3.0
- FlexPro 5.0
- HP SDF 3.0
- MATLAB 5.0
- MTS I-DEAS
- nCode
- LDS NRF
- MTS RPC-III
- LDS Dactron RT Pro (binary)
- SoMat EASE
- UFF58 A(SCII) and B(inary)
- Waveform audio format WAV
- LDS WFT

The generic *Perception* export function is a powerful feature that allows you to export a specific part of interest to a third-party analysis program.

Within the Export Recording dialog you select one of the available formats, set your options and go. For each export format a variety of format-specific settings is available.

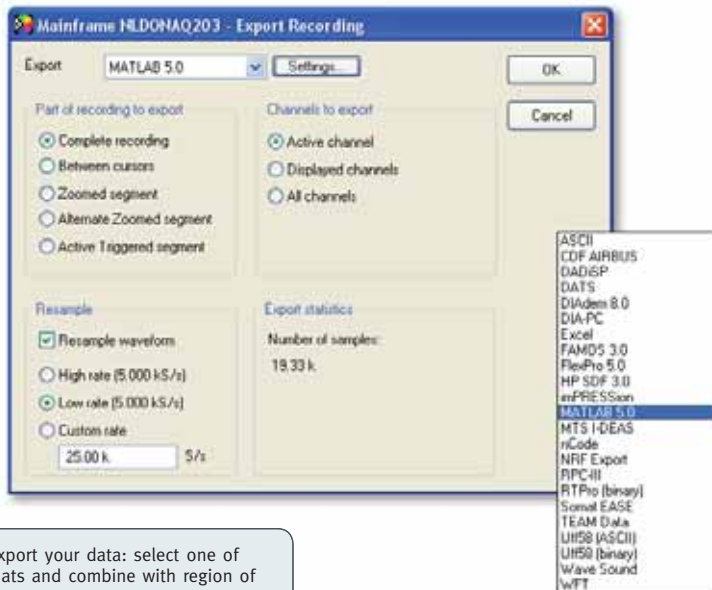
Export settings

The Export Recording dialog defines the region of interest to export. You do this by selecting:

- **Complete recording** A full recording is being exported.
- **Between cursors** The export time interval is limited to the area defined by the position of the two vertical display cursors.
- **Zoomed segment** The export time interval will be set to the start and stop time of the Zoom display.
- **Alternate zoomed segment** The export time interval will be set to the start and stop time of the Alternate Zoom display.
- **Active triggered segment** The export is limited to a selected triggered segment.

Apart from the region of interest to export, you can also select which channels to export. The following options are available:

- **Active channel** The channel that is currently selected in the display will be exported.
- **Displayed channels** All channels that are currently visible in the active display page will be exported.
- **All channels** All channels within the display, being on current pages or hidden pages, will be exported, i.e. all traces on all pages of the waveform display.



Flexibility to export your data: select one of the many formats and combine with region of interest.



Resample ...

Most LDS data acquisition systems supported by *Perception* include the ability to sample different channels at different rates or to switch sample rates upon trigger.

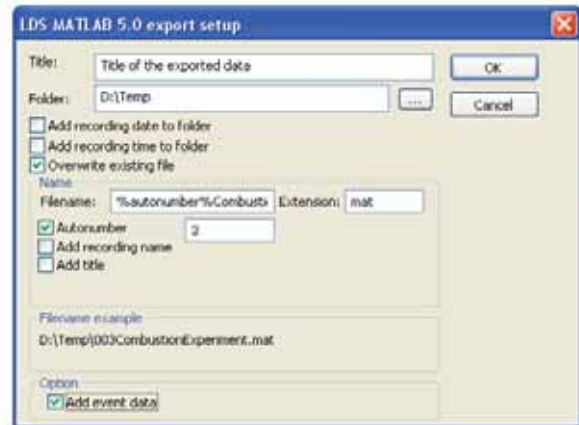
However, most analysis programs require uniformly sampled data. For this reason the export formats resample the data to a single timebase if required by the destination format. For destination formats supporting multiple timebases resampling is an option.

... timebase settings

When available, you can select or export the timebase to be:

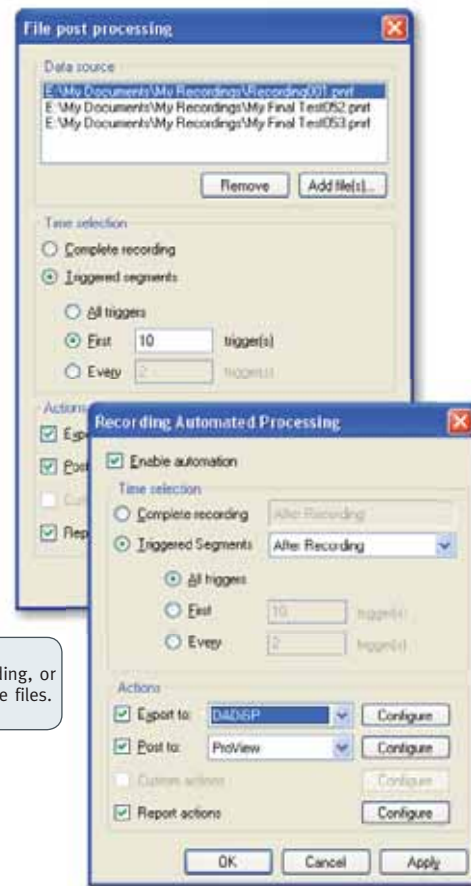
- **Timebase High** Fast sample rate if data is acquired with multiple timebases.
- **Timebase Low** Slow sample rate if data is acquired with multiple timebases.
- **Re-sample Timebase** Create a new, artificial timebase for the exported data.

This last option can also be used to resample to a timebase which is more suitable for frequency analysis, e.g. 10.24 kS/s.



Export data while or after recording, or use batch processing on multiple files.

Each specific export format has its own set of options.



Automation

Various automation options within *Perception* allow you to automatically file export recorded data. You can do this either based on "live" data or on stored data.

When operating on live data (Recording Automated Processing) you can export at the end of a recording or - when the acquisition is sweep-based - optionally at the end of a triggered segment (a sweep) while recording. The first results then become available while your experiment is still running.

Apart from exporting, you can also select to "post" data to supported applications. A report can be used to log all actions.

When operating on stored data (File Post Processing) you can create a batch processing list of file to export. Now you can export sequentially up to hundreds of recordings with a single mouse click without further interaction.

Here you also have the option to go for a complete recording or for triggered segments only.

Each action can be configured separately.

Head Office
HBM GmbH
Im Tiefen See 45
64293 Darmstadt
Germany

Tel: +49 6151 8030
Email: info@hbm.com

France
Sales Office
LDS Test and Measurement SARL
9 ave du Canada, Les Ulis, BP 221
91942 Courtabouef Cedex

Tel: +33 (0)1 64 86 45 45
Email: info@hbm.com

Germany
Sales Office
LDS Test and Measurement GmbH
Carl-Zeiss-Ring 11-13
85737 Ismaning

Tel: +49 89 92 33 33 0
Email: info@hbm.com

UK
Sales Office
HBM United Kingdom Limited
1 Churchill Court, 58 Station Road
North Harrow, Middlesex, HA2 7SA

Tel: +44 (0) 208 515 6100
Email: info@uk.hbm.com

USA
Sales Office
LDS Test and Measurement LLC
8551 Research Way, M/S 140
Middleton, WI 53562

Tel : +1 (608) 821 6600
Email: info@hbm.com

PR China
Sales Office
LDS Test and Measurement
Room 2912, Jing Guang Centre
Beijing, China 100020

Tel: +86 10 6597 4006
Email: info@hbm.com

